



CULTURE EDITION

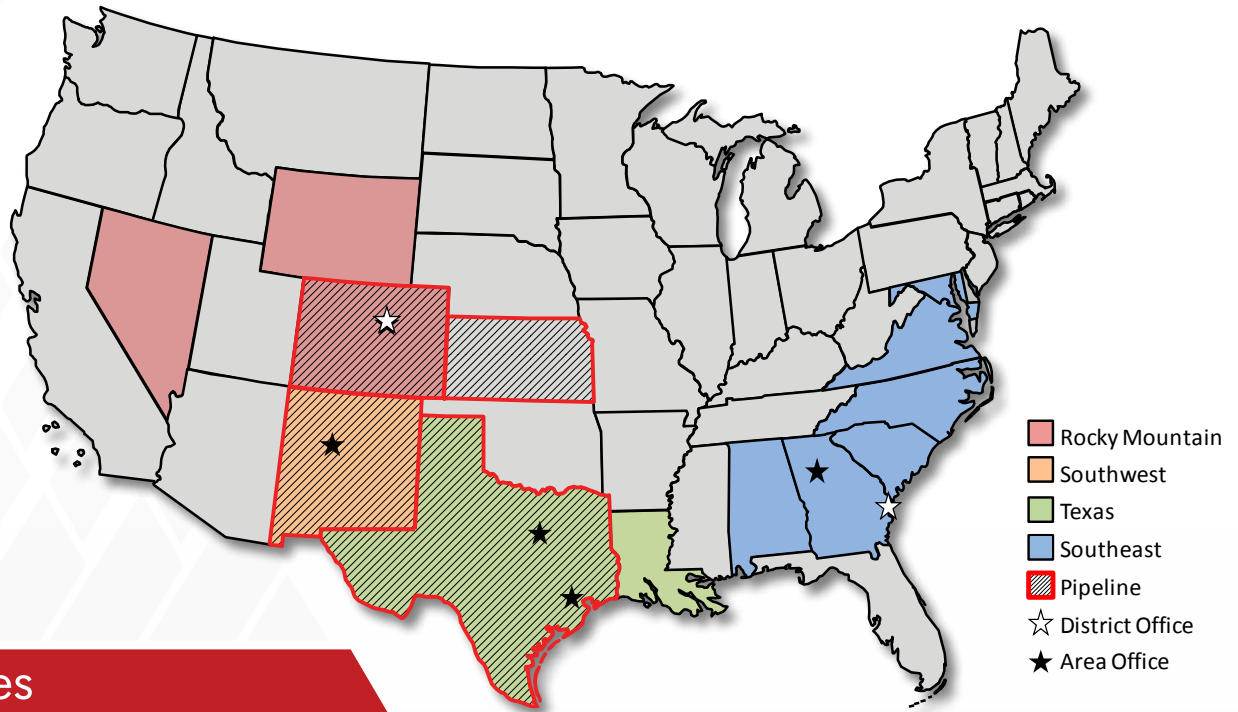
Welcome to Western Summit

In 1981, when Colorado-based Western Empire Constructors, Inc. formed Summit Constructors, Inc., (SCI) a water and wastewater plant builder--full of expectations, energy, and focus started to grow and take shape. We successfully built our first municipal water treatment plant in the small mountain town of Florence, Colorado, and began to realize our core competency of water and wastewater construction, thus finding our niche in an emerging market. During the late 80s, SCI successfully expanded workforces into many new states.

As we headed into the early 90's, Summit Constructors was a commonly used name. so we changed our formal name to Western Summit Constructors, Inc. (WSCl). Through the 1990s-2000s, WSCl realized it was time to branch out beyond our Rocky Mountain area and formally began an expansion westward through Nevada and New Mexico, and eastward through the Gulf Coast and Georgia. In 2008, WSCl merged with ERS Constructors adding pipeline capabilities to our portfolio. In 2009, WSCl opened their newest area office in Ft. Worth, TX. Today, we operate independently but fully supported under our parent company, Kiewit Corporation, as the Western Summit District.

WSCl employees are the lifeblood of the organization. Hiring people that embrace our core value system will maintain a stable foundation for new accomplishments and success. We are proud of our heritage and are looking forward to a bright future.

Areas of Operation



Core Values

PEOPLE Our Foundation, Our Future

Whether you decide to join the Western Summit team as an intern to gain valuable experience, as a recent graduate embarking on your career, or as an experienced professional seeking enhanced growth, you will be provided with immediate responsibility and real opportunity to participate in decision-making and shared success. We build opportunities for you to grow.

INTEGRITY Committed to Being Fair and Honest

WSCI has built its reputation as a premier contractor one project at a time. We strive to always be the contractor of choice for owners. We believe strongly in the benefits gained through partnering projects with owners, joint venture partners, and engineers.

INNOVATION Stimulate and Expect Creativity

Hard bid construction is a highly competitive business. Western Summit is always looking for the edge; that advantage that will keep us ahead of the pack both on bid day and throughout the construction period.

INTENSITY Delivering With a Sense of Urgency

Western Summit relies on our people and expertise to deliver projects ahead of schedule and below budget. The emphasis on delivering with a sense of urgency has led Western Summit to be very competitive.

CAN-DO Our Attitude, Our Belief

We specialize in difficult projects always ready for our personnel and expertise to pursue the challenge. We Can-Do it on time, under budget and safely because we have the best people in the industry. Can you do it?



JENNA LAKE
SAFETY INTERN
MURRAY STATE UNIVERSITY



Buckman Direct Diversion Project | Santa Fe, New Mexico
"My internship at WSCI taught me that employees can focus on performance while remaining safety-minded. WSCI is a company that has built a culture focused on providing a safe and healthy environment for all their employees. Everyday people demonstrate the WSCI Core Values."

Safety: Our Culture

WSCI is guided by an established safety and health policy. This policy is based on a sincere desire to eliminate occupational injuries and illnesses, eliminate damage to equipment and property, and protect the general public whenever and wherever the public comes in contact with, or is affected by, the company's work.

The ultimate success of a safety and health program depends upon the full cooperation of each individual employee. It is management's responsibility to see that safety and health rules and procedures are stringent and enforced, and to see that effective training and educational programs are executed to the greatest advantage.

At Western Summit our commitment to safety, although superior, always continues to improve. We are committed to providing an accident-free workplace to all our employees. We believe this model of continuous improvement through employee involvement, training, and safety will allow us to continue being an industry leader.



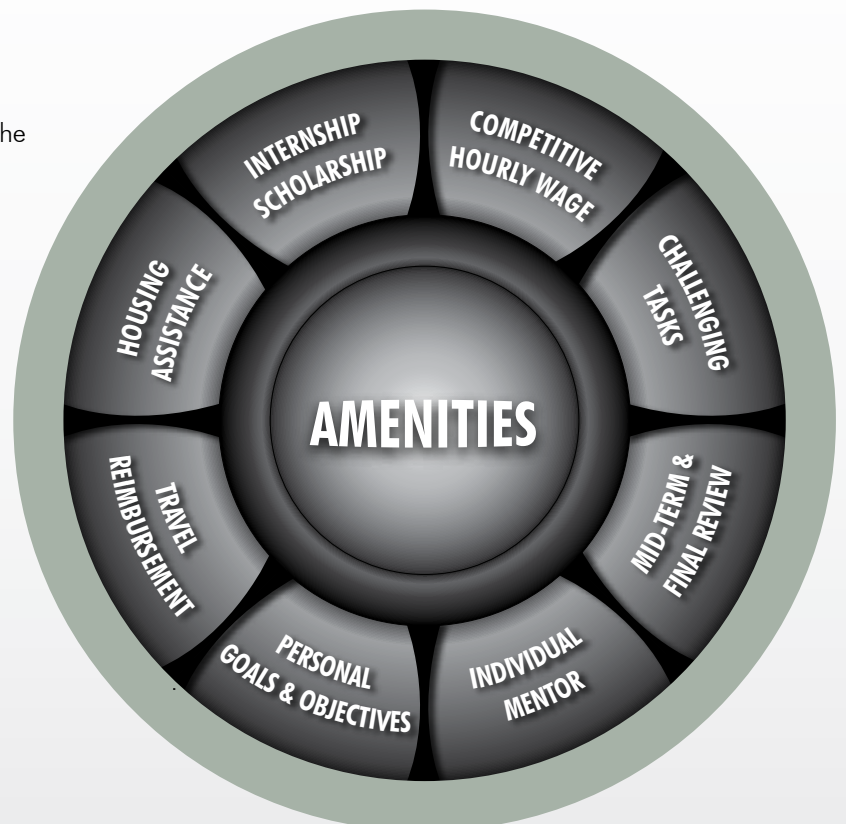
CHRIS VANDREESE
FIELD ENGINEER

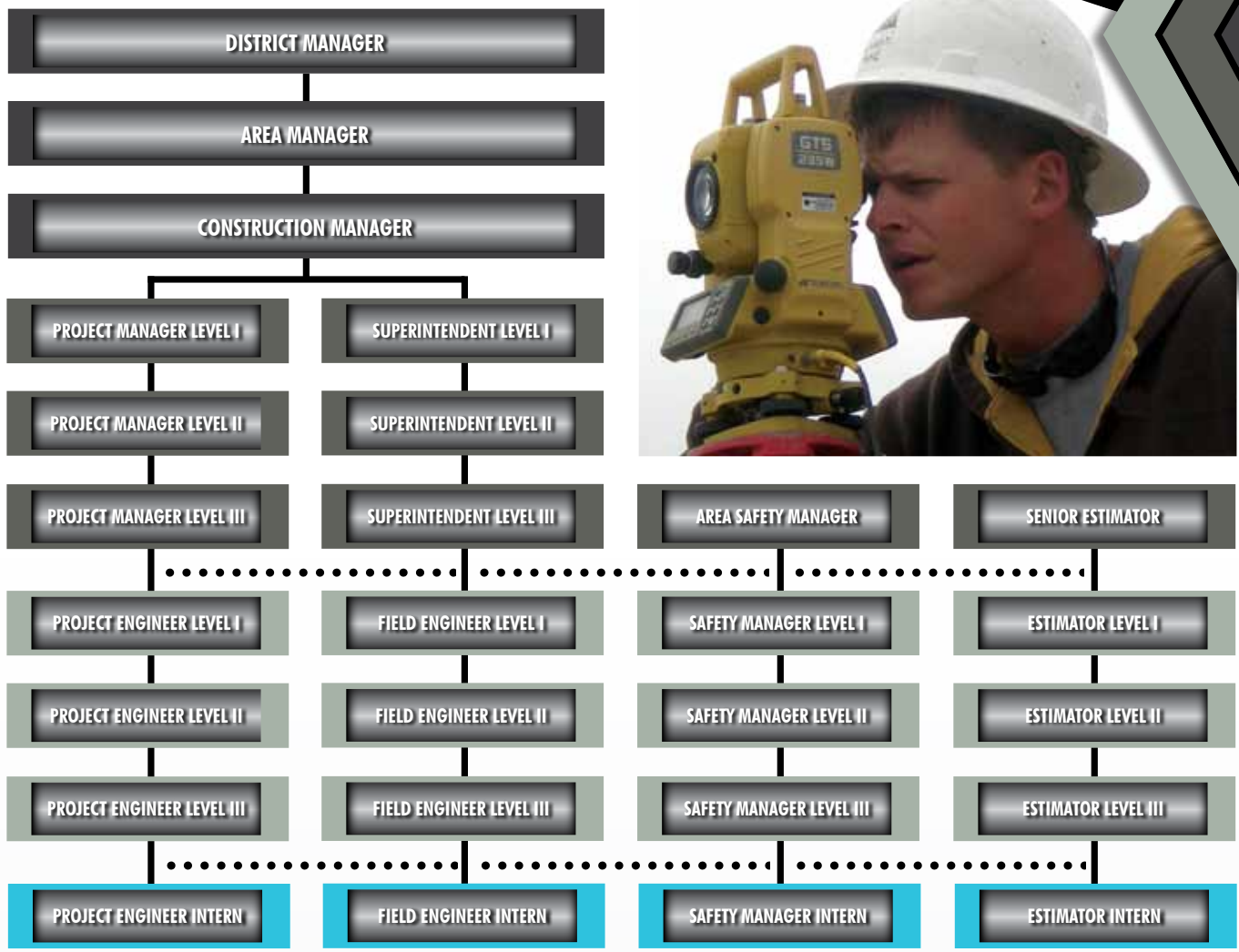


Prairie Waters Aurora Reservoir WPF | Aurora, Colorado
"WSCI has the best program for college interns in the industry. As an intern you get the opportunity to see different parts of the country, earn a wage, and work on some amazing projects. Interns with WSCI are not "typical" interns, they are expected to be part of the team, given responsibilities as if they were full-time employees."

Internship Program

Western Summit provides college students all over the country with the opportunity to participate in semester long internship/co-op program. All interns are hired into positions as Field Engineers, Project Engineers, Estimators or Safety Managers. Throughout the internship/co-op period with WSCI, students are encouraged to perform many of the same duties as our salaried employees in these positions. Each student will participate in a mid-term and final review with their mentor. During these reviews, students are encouraged to openly communicate with their mentor about skills they have developed and skills that they have not had direct exposure to but would like to learn on the job. We believe this involvement allows our program to continue to evolve.





Career Development: Training at WSCI

To insure that all levels of employees are equipped with the necessary skills and tools to safely and efficiently conduct their jobs, Western Summit has implemented several key training programs. At the operations level, Western Summit recognized the need to provide continued education for integral positions including: Foreman, Project Engineers, Field Engineers, Estimators, and Safety Managers. Other training programs employees participate in are:

- New Hire Orientation**
- Project Engineer Academy**
- Field Engineer Academy**
- Foreman Academy**
- Operations Management Academy**
- Leadership Succession Planning (LSP)**
- Pipefitter Academy**
- Supervisory Safety Training (SST) I-III**
- Negotiation Skills**
- MC2, Expedition and P6 Training**

WES HAWKINS
ESTIMATOR



Ft. Worth, Texas Office
 "WSCI has a great staff that realizes that learning never stops. During my internship I was gradually given more responsibility and expected to perform at a higher level. At the end of my internship, I walked out feeling confident that WSCI was where I wanted to be."

Job Descriptions

Field Engineer

The Field Engineer position introduces you to a variety of job site activities that will develop your understanding of WSCI's construction process and management systems. As a Field Engineer, you will be exposed to control and layout, excavation, yard piping, concrete forming, placing and finishing, steel erection, building trades, mechanical and electrical installation, shop drawings, and other important aspects of field activities. This position together with the project engineer's position is used as a part of the training leading to further advancement as a superintendent and/or project manager. Performing field engineering duties well and understanding the construction process are very important to your individual and project success.

Project Engineer

The position of Project Engineer is intended to introduce a variety of office activities that will develop your understanding of the project administration and procurement aspect of the construction process. As a Project Engineer, you will be working with shop drawings, submittals, schedules, pay requests, contract changes, and other important aspects of project documentation. This position together with the field engineer's position is used as a part of the training leading to further advancement as a superintendent and/or project manager.

Safety Manager

The Safety Manager position introduces you to various aspects of WSCI's safety management program at the project level. As a Safety Manager, you will examine plans and specifications to identify potential safety hazards, make suggestions to eliminate hazards, tour the construction site to identify and correct potential hazards, establish the weekly general safety meeting, weekly supervisor's safety meeting and/or gang box safety meetings, coordinate inspections, and coordinate and conduct safety training and new hire orientations. At Western Summit our commitment to safety is pivotal in the success of our employees and the organization.

Project Estimator

Project Estimators perform estimates primarily for water, wastewater, and conveyance pipeline construction projects. This position carries a diverse set of responsibilities such as analyzing drawings, specifications, proposals, and other documentation to prepare time, cost, and labor estimate for projects and soliciting subcontractor and/or vendor quotes, evaluating them for scope and qualifications. Delivering accurate and timely estimates is key to the organizations' success and growth.





Project Profile: Prairie Waters Aurora Reservoir WPF

Aurora, CO – As Western Summit continues construction of its largest project in their 30 year history, the Prairie Waters Aurora Reservoir Water Purification Facility Project Team is a remarkable project. Located on a green-field site just north of the Aurora Reservoir, F-16 jets from Buckley Air Force Base fly over all day long as this \$190 million project progresses.

This monumental 50 million gallons per day (mgd) drinking water plant will be a state-of-the-art treatment facility when completed in 2011. Western Summit and fellow stakeholders - CH2M Hill as the Design Engineer, Carollo Engineers as Construction Manager, and the City of Aurora as Owner, all embrace the mindset of sharing the same goal: to complete this project with great success on time and on budget, with an exceptional safety record.

This water treatment plant and associated projects will create a sustainable water supply to support Aurora's constant growth for the next 12 years and provide necessary infrastructure for the second largest water district in Colorado.

Project Profile: Middle Oconee WRF

Athens, GA – The Middle Oconee WRF is part of a trio of upgrades that are the largest Public Works projects in Athens Clarke County history. The project is responsible for providing millions of gallons of water to residents, businesses, and organizations throughout the county. WSCI has taken on the task of expanding the current reclamation plant from 2 MGD to 10 MGD and with the expansion, the plant will also utilize state-of-the-art odor and noise control technology and at a higher level of treatment. With a 30 day delay due to permitting and owner related issues, historic amounts of rainfall and higher than average groundwater table elevations have been a challenge during our efforts to dewater major excavations, the project remains close to the initial schedule.





A Bright Future

Western Summit maintains a retention rate well above the industry average. A large portion of our strategy is recruiting talented students from universities and colleges from the nation's top construction and engineering programs. Our recruiting team builds strong relationships with the faculties at these core institutions, which enables us to be considered an employer of choice.

During the internship/co-op program, participants work directly with our project management teams to gain a better understanding of heavy industrial construction and the water and wastewater industry. We believe this program demonstrates shared expectations. Though expectations are high at Western Summit, the reward of being a part of an organization that values their employees, offers challenging projects and rapid growth opportunities makes for an exciting career with longevity.

During our interview process we become familiar with our potential employees' needs. If an individual's views align with WSCI's core values and mission, we make a highly competitive offer.

One of Western Summit's primary goals is to be a leader in the area of recruiting within our industry. We define best practices and ensure Western Summit is the company of choice for the construction workforce of the future; perhaps, your future.

Apply Online: www.westernsummit.com/careers

Kelli Nemeth, Recruiting Manager - Kelli.Nemeth@westernsummit.com

Follow Us:

www.westernsummit.com/careers



Twitter @WesternSummit



LinkedIn